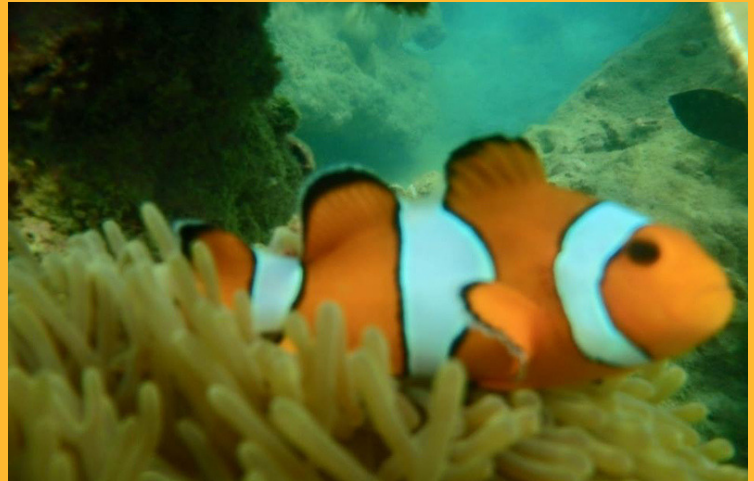


ONE DAY TRIP

CORAL & RACHA ISLAND

*Duration: 09.00 am. – 16.00 pm.
Departure Hotel Pick-up Time: 08.00 am.
Rate: 80 USD*



ITINERARY

- 09.00 am: Rawai port.
- 09:30 am: Departure from Rawai port to Coral Island
- 09:45 am: At Coral Island for relaxing
- 12.00 am: Lunch at Coral island (Thai Buffet)
- 13.00 pm: Leaving from Coral Island to Racha Island
- 14.00 am: Arrive at Racha Island and continue to Konkae Bay (Siam Bay)
- 15.30 pm: Back to Nonthasak Marine Rawai Port.
- 16.00 pm: Arrive to Nonthasak Marine Rawai Port.

TOUR INCLUDE

- Coffee, Tea and Drinking Water
- Life Jacket
- Beach Chair
- Snorkeling
- Insurance
- Experience Guide
- Lunch Buffet
- Season Fruit